

CENTRAL COAST
SCHOOL





Baye Ma'a e



Partnership Programme

CCG is a member of the Singapore Chinese Chamber of Commerce and Industry (SCCCI) and is proud to be a member of the Singapore Chinese Chamber of Commerce and Industry (SCCCI) and is proud to be a member of the Singapore Chinese Chamber of Commerce and Industry (SCCCI).

CCG is a member of the Singapore Chinese Chamber of Commerce and Industry (SCCCI) and is proud to be a member of the Singapore Chinese Chamber of Commerce and Industry (SCCCI).

CCG is a member of the Singapore Chinese Chamber of Commerce and Industry (SCCCI) and is proud to be a member of the Singapore Chinese Chamber of Commerce and Industry (SCCCI).

CCG is a member of the Singapore Chinese Chamber of Commerce and Industry (SCCCI) and is proud to be a member of the Singapore Chinese Chamber of Commerce and Industry (SCCCI).

International Learning

CCG is a member of the Singapore Chinese Chamber of Commerce and Industry (SCCCI) and is proud to be a member of the Singapore Chinese Chamber of Commerce and Industry (SCCCI).

CCG is a member of the Singapore Chinese Chamber of Commerce and Industry (SCCCI) and is proud to be a member of the Singapore Chinese Chamber of Commerce and Industry (SCCCI).

CCG is a member of the Singapore Chinese Chamber of Commerce and Industry (SCCCI) and is proud to be a member of the Singapore Chinese Chamber of Commerce and Industry (SCCCI).

L... C... L... D...
...
...
...

A... F... E... A... H... G...
...
... A... E...
...
...

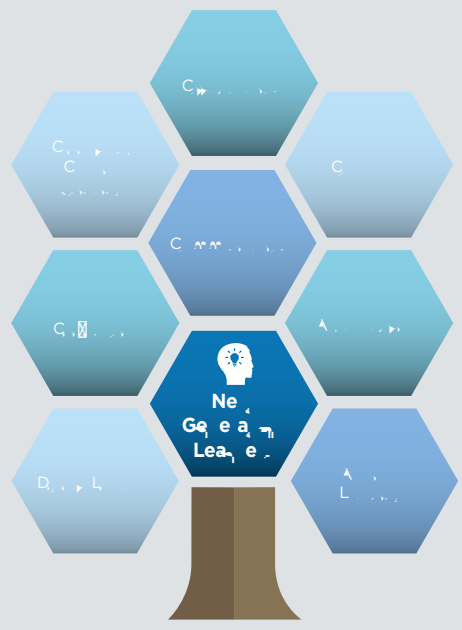
A... J... N...
G... L...
...
...
...

NEXT STEPS

D... D... L... J...
...
... J... M...
...

L...
...

O... G... B...
...





Ma

En

En

En

En

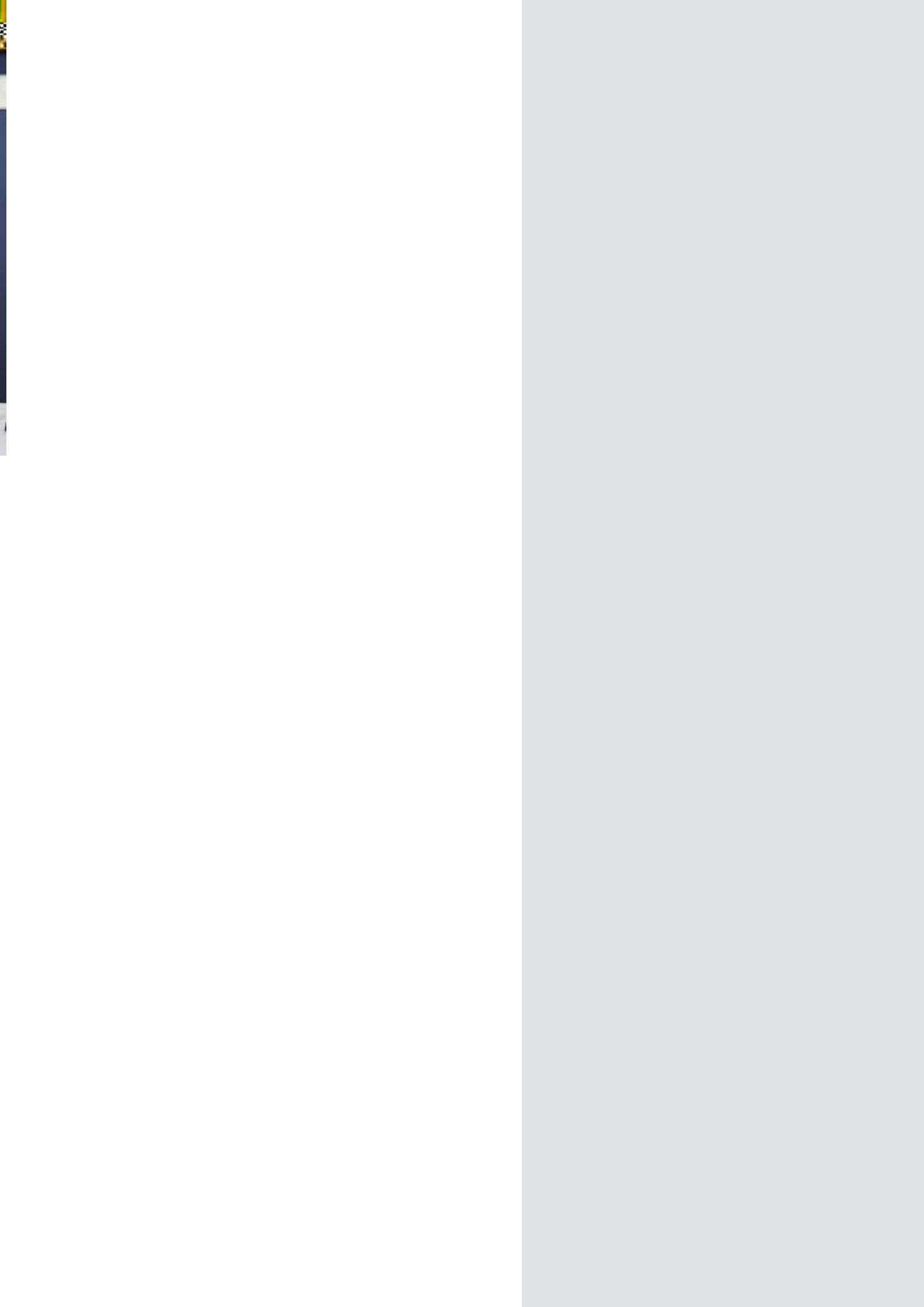
En

En

En

HSC Re.

H





G a ba C a / a e e..

P a... m... l...
 M... l... l... l...
 M... l... l... l...
 P... l... E... P... m... l...
 l... l... l... l...

A... m... m... l... l... l...
 P... m... A... l... l... l...
 K C... l... l... l...
 l... l... l... l... l...
 m... l... P... l... D... l...
 l... D... l...

A... m... F... l... l... N... C... l...
 l... l... l... l... l...
 l... l... F... l... l... C EIR C...
 l... l... l... l... l... l...
 l... l... l... l...

C... m... l... P... m... m... l...
 l... l... l... l... l...
 l... l... l... l... l... m... l...
 l... l... l... l... l... l...
 l... l... l... l... l... l...

C a a A / a e e..

A... l... A... P... l... l... l...
 l... l... l... l... l... l...
 l... l... l... l... l... l...

A... l... l... l... l... l... l...
 l... l... l... l... l... l... l...
 l... l... l... l... l... l...
 l... l... l... l... l... l...
 J... l... l... l... l... l... m...
 l... C... l... l... l... l... l...
 l... m... l... l... l... E... l... l...
 l... l... l... l...

M... l... l... l... C... l... l...
 l... l... A... l... l... l... l... l...
 A... l... l... l... l... l... G... l... l...

G... l... E... A... l... m... l... l...
 l... l... l... l... l... l...
 l... l... l... l... l... l... l...
 l... l... l... l... l... l... l...
 l... l... l... l... l... l... l... l...

D... l... l... l... l... l... l... l... l...

Section C

A → C → H → M → I → L → N → H → M → I → H → G → H

C → P → M

L → K → K → C → C → C → G → G → J

Section D

M → G → A → C → C → M → J

NEXT STEPS

A → I → F → M → A → J

E → C → J → A → M → G

A → M → J → M → C → H





Leade Leaa

A ... M ...
... M ...
... M ...
... M ...
... C ...
... J ... C ...
... M ...

E ... M J ... O ...
... G ...

A ...
... M ...
... M ...
... M O ...

E ... J ...

La LA A ... L ...
 A ... M CCG ...
 A LA ... a





GOAL: Increase the number of children with disabilities who are active in sports and physical education. **ACHIEVEMENT:** 100% of children with disabilities participated in sports and physical education activities.

We believe

ACHIEVEMENTS 2023

Financial Commitment

Continued commitment to the **ONG P** (National Olympic Committee of the Philippines) and the **J** (Japan Sports Association) to support the development of sports and physical education for children with disabilities.

Continued commitment to the **F** (Federation of National Organizations of the Philippines) and the **K** (Korea Sports Association) to support the development of sports and physical education for children with disabilities.

Targeted Support Services

Continued commitment to the **C** (Cebu Sports Association) and the **C** (Cebu Sports Association) to support the development of sports and physical education for children with disabilities.

Measures

Continued commitment to the **D** (Department of Education) and the **M** (Ministry of Education) to support the development of sports and physical education for children with disabilities.

Side Services

Continued commitment to the **S** (Sports and Physical Education) and the **S** (Sports and Physical Education) to support the development of sports and physical education for children with disabilities.

Continued commitment to the **P** (Philippine Sports Association) and the **M** (Ministry of Education) to support the development of sports and physical education for children with disabilities.

Continued commitment to the **S** (Sports and Physical Education) and the **S** (Sports and Physical Education) to support the development of sports and physical education for children with disabilities.

Q. How do you think we can move forward? C. Yes, we can.

Şa We be,

Q. How do you think we can move forward? D. Yes, we can. We can move forward by working together and supporting each other. We can create a better future for ourselves and our community.

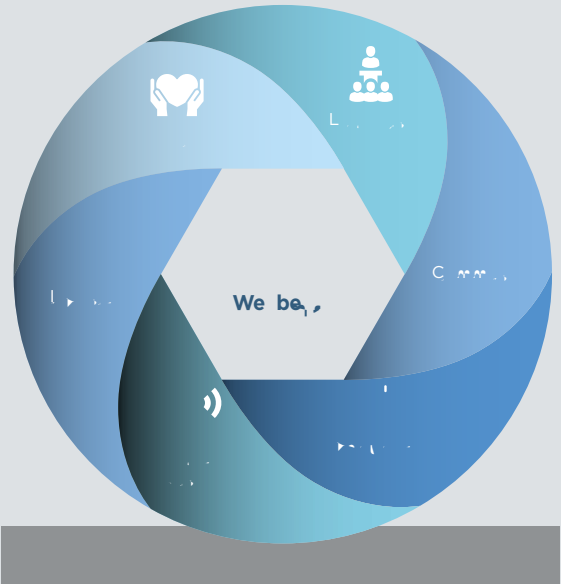
L. Yes, we can. We can move forward by working together and supporting each other. We can create a better future for ourselves and our community.

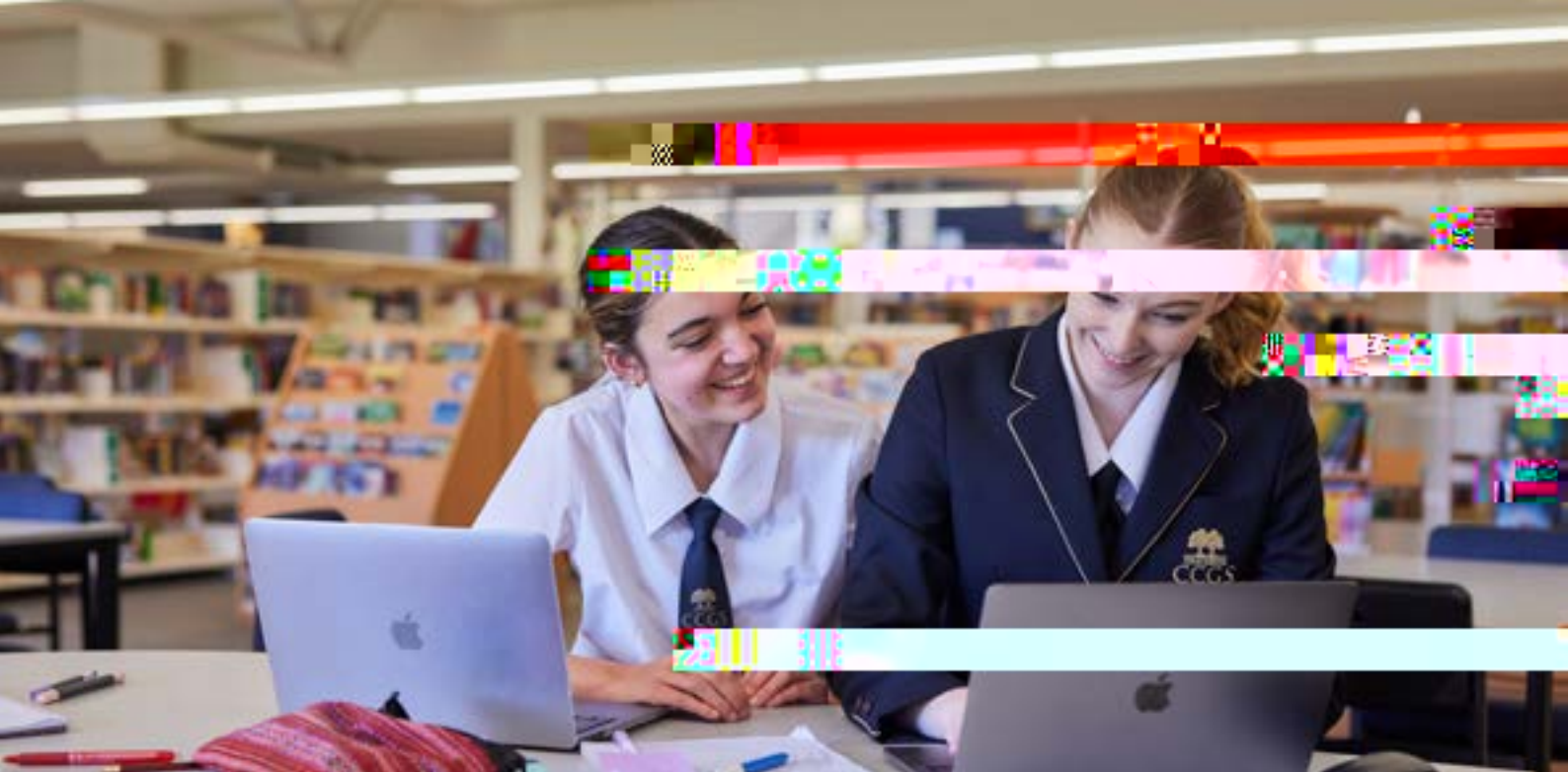
NEXT STEPS

M. Yes, we can. We can move forward by working together and supporting each other. We can create a better future for ourselves and our community.

A. Yes, we can. We can move forward by working together and supporting each other. We can create a better future for ourselves and our community.

A. P. Yes, we can. We can move forward by working together and supporting each other. We can create a better future for ourselves and our community.





Հայ Երաժշտական Գործընկերության Կազմակերպչական

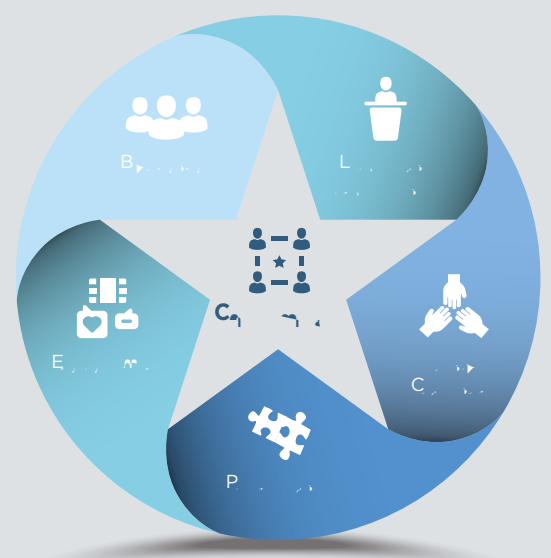
1. **Plan** – Determine what you want to achieve and how you will get there. This involves setting clear goals and objectives, identifying the resources you need, and developing a detailed action plan.

NEXT STEPS

2. **Do** – Execute the plan. This is the implementation phase where you put your strategy into action. It involves allocating resources, assigning tasks, and monitoring progress.

3. **Check** – Monitor and evaluate the results. This involves tracking performance against the plan, identifying any deviations, and assessing the overall effectiveness of the strategy.

4. **Act** – Adjust and improve. Based on the results of the check phase, you may need to make adjustments to the plan or the execution process to ensure you are on track to achieve your goals.





Peer to a Leader

Exercise Procedure

1. Obtain a copy of the M-CCG form.
2. Fill out the form.

